

MINUTES

Meeting: MELKSHAM AREA BOARD
Place: Melksham Assembly Hall, Market Place, Melksham SN12 6ES
Date: 29 March 2011
Start Time: 6.00 pm
Finish Time: 9.40 pm

Please direct any enquiries on these minutes to:

Kevin Fielding (Democratic Services Officer), Tel: 01249 706610 or (e-mail) kevin.fielding@wiltshire.gov.uk

Papers available on the Council's website at www.wiltshire.gov.uk

In Attendance:

Wiltshire Councillors

Cllr Jonathon Seed (Chairman), Cllr Rod Eaton (Vice Chairman), Cllr Mark Griffiths, Cllr Jon Hubbard, Cllr Stephen Petty and Cllr Roy While

Wiltshire Council Officers

Abbi Gutierrez – Community Area Manager
Kevin Fielding – Democratic Services Officer
Niki Lewis – Service Director
Mark Stone - Transformation Programme Director
Lucy Murray-Brown – Campus Operational Estate Management Lead
Charlotte Moore – Project Manager

Town and Parish Councillors

Melksham Town Council – Chris Petty & Terry Welch
Atworth Parish Council – Effie Gale-Sides & David Webb
Keevil Parish Council – Myra Link
Melksham Without Parish Council – Mike Mills
Seend Parish Council – Joan Savage & Thelma Carr

Partners

Wiltshire Police – Inspector Christian Lance & Mel Rolph
Wiltshire Library Service – Peter Waterman
Melksham Community Area Partnership – Chris Holden & Colin Goodhind
Melksham Oak School – Stephen Clark

Melksham Old Peoples Forum – Brian Warwick
Melksham Chamber of Commerce – Graham Ellis

Members of Public in Attendance: 69

Total in attendance: 113

<u>Agenda Item No.</u>	<u>Summary of Issues Discussed and Decision</u>
1.	<p><u>Chairman's Welcome, Introduction and Announcements to include the Summary on the Campus Development Process to date and Meeting Conduct</u></p> <p>The Chairman welcomed everyone to the Melksham Assembly hall and explained that the meeting would focus purely on the Melksham community campus proposals.</p> <p>The Chairman introduced the Wiltshire councillors who made up the Melksham Area Board and explained that the members of the Board would be voting on a recommendation which would then be passed to the Cabinet of Wiltshire Council who would then make the final decision on the campus.</p> <p>The Chairman paid tribute to the members of the Melksham Community Area Partnership who had organised the community area consultation on the campus proposals and stressed that the Area Board would try to give as many people as possible the opportunity to speak on the proposals.</p>
2.	<p><u>Apologies for Absence</u></p> <p>There were no apologies for absence.</p>
3.	<p><u>Declarations of Interest</u></p> <p>Cllr Rod Eaton – Personal interest, Town Mayor and member of Melksham Town Council.</p> <p>Cllr Mark Griffiths – Personal interest, member of Melksham Town Council.</p> <p>Cllr John Hubbard – Personal interest, member of Melksham Town Council.</p> <p>Cllr Steve Petty – Personal interest, member of Melksham Without Parish Council.</p>
4.	<p><u>Outline, Background and Summary of the Melksham Campus Proposal</u></p> <p>Lucy Murray Brown - Campus & Operational Estate Management Lead, Wiltshire Council outlined the campus proposal and then gave some background to the proposal.</p> <p>Points made by Lucy Murray Brown included:</p>

Context:

- Area Board 2 February 2011.
- A campus is a building, or buildings, in a community area that would provide the services the local community needed in an accessible location.
- Local community involvement was critical to the success.
- Reduced the long term financial, environmental and operational pressures on operating aging, low quality buildings.
- Potential to co-locate with partner and voluntary organisations.
- Encouraged the council to explore wide ranging innovative arrangements to allow local communities to have more influence in service delivery.
- Three tiers of service provision: core, community and partner.
- Cabinet 15 February 2011 – approval of the outline timetable.

Benefits of a new facility:

- Extended opening hours.
- Multi-purpose visits.
- Modern, up to date facilities
- Accessible community IT provision.
- Sustainable and efficient facilities
- Additional community facilities
- Exploration of innovative community focused management arrangements

Progress to date:

- Starting point is to consider all services currently provided.
- Audit & Research project.
 - *initial consultation*

- *sustainability appraisal*
- *conditions survey*
- *build and environment*
- *service reviews*
- *equalities*
- *perceived savings*

- Options Appraisal.
- Preferred option.
- Second round of consultation.

The Proposal for Consultation:

That the following facilities and services would be provided within a new community campus for Melksham, located on land at Woolmore Farm, adjacent to the Melksham Oak School:

- Leisure centre – 25m swimming pool plus learner pool; 4-court sports hall; multi-activity rooms; 60 station fitness suite; wet and dry changing, squash courts and associated ancillary facilities.
- 6 lane indoor bowls rink and group room.
- Library including improved IT suite for community internet access.
- Registrar service.
- Reception for all campus services and offering advice on other council services.
- Cafe facilities.
- Crèche.
- Youth centre facilities.
- Personal care room(s) (e.g. for disabled people and their carers).
- Desk space for community based council and partner staff.
- Multi-purpose training suite for both professional and community use.
- Multi-purpose meeting/resource rooms.

	<ul style="list-style-type: none"> • Health care facilities e.g. GP surgeries, specialist clinics (TBC by partner organisations). • 100 space car park (indicative). • Provision of land for outdoor recreational use adjacent to campus facilities. • Outdoor sports changing facilities. <p>The Chairman thanked Lucy Murray Brown for her presentation.</p>
5.	<p><u>Results of the Campus Consultation</u></p> <p>Chris Holden – Chairman, Community Area Partnership outlined the results of the Campus consultation that the Melksham Area Board had requested the Partnership carry out.</p> <p>Points made by Chris Holden included.</p> <p>That the Melksham Community Area Partnership had:</p> <ul style="list-style-type: none"> • Put together a questionnaire that had been circulated to 12,500 households throughout the Melksham community area and there had been 803 returns. • Put together a young people questionnaire to gauge the feeling of the youth of the Melksham community area. • Organised three Open Days to present the Campus proposals • Organised ten meetings with various local groups to gauge what they wanted from the Campus. • That the answers to the questionnaire contained useful bullet points of public opinion. <p>The responses to the questionnaire are attached to these minutes.</p> <p>Chris Holden thanked the public for taking the time to partake in the questionnaire.</p> <p>The Chairman thanked Chris Holden and the Community Area Partnership for their hard work in ensuring that the questionnaire formed part of the Campus data.</p>

CAP Consultation Results

6.

Responses to Questions Submitted in Advance

It had been intended that Lucy Murray Brown - Campus & Operational Estate Management Lead, Wiltshire Council would deal with responses to any questions that had been submitted in advance and answer any supplementary question submitted from the floor.

It was noted that the questions and answers were not available for the Councillors to digest in written form, these questions and answers were also not on the Wiltshire Council website, Cllr Jon Hubbard requested that it was noted that he was unhappy that Area Board members would have to make decisions without this information to hand and that members of the public were unable to view this information.

The Chairman advised as the submitted questions and answers were not available in hard copy, instead of asking Lucy Murray Brown to read them out as originally intended, he was happy that attendees could ask questions to which Lucy Murray Brown or other officers present would endeavour to answer.

The Chairman was advised by Lucy Murray Brown that the questions which had already been submitted would be published on the Wiltshire Council website the following day,(30 March 2011, in the event they were available by the end of the meeting). It was also agreed that any attendees present who left their address would have the submitted questions and answers posted to them by the Campus & Operational Estate Management team.

The Chairman advised as the submitted questions and answers were not available he was happy that attendees could ask questions to which Lucy Murray Brown would endeavour to answer.

Note: It was also agreed that any attendees present would have the submitted questions and answers posted to them by the Campus & Operational Estate Management team.

Note: of the 113 people present at the meeting only 8 had given a postal address, these 8 addresses were passed on to Campus & Operational Estate Management team.

Points raised on the night:

That the questions and answers should have been made available for all to read and digest, prior and at the meeting.

Officers had more than enough time to get the Q's & A's ready and available for this meeting. The Chairman expressed a view, shared by some other members, that this was not the case.

Melksham town centre will die if we lose the Library.

Questions raised on the night:

Public access to the Melksham Oak site, what about the school childrens' safety?

The exact location of and access to the campus would be determined during the design and planning stage of the project and as such is not known at this stage.

Community use of school sites or facilities on or adjacent to school sites is a national strategic recommendation by Sport England and there are several examples in the county and across the country where this arrangement is already in place and working well. Furthermore, the wider integration and mixed use of school facilities by the community was a fundamental part of the development and funding package for the school.

The Council does not agree that a well-planned campus adjacent to the Melksham Oak Community School would lead to serious implications for the safety and security of pupils.

Richard Wood – Can Wiltshire Council confirm that the land shaded on the map will not be built on?

Discussions with the adjoining land owners have been continuing, as whilst a development wholly on Council-owned land is possible, there may be benefits to acquiring additional land. However, these discussions have been put on hold pending a wider final advertisement for landowners to come forward across a wider area, assuming the Area Board approve this approach.

Jes Ribble – Why was the split site not the preferred site if it is the best for sustainability?

The Sustainability Appraisal (SA) is a spatial planning tool, which provides information that is both of use and is relevant. However, as with all the information gathered and assessed throughout the audit and research phase of the project, it is one part of the jigsaw and should not necessarily be considered more or less important than the rest.

*The findings of the SA report were indeed taken into account when reviewing all the audit and research work to establish the current proposal, which has been selected as the preferred site for the campus because it is considered the most deliverable, broadly sustainable and appropriate option when **all** relevant factors are taken into account.*

Will there be a transport plan and when will the Campus be up and running?
Transport arrangements will be established through a travel plan, which forms part of a planning application. It is important not to pre-empt any part of this application and therefore the Council cannot answer detailed questions at this stage, however it must be noted that appropriate access to the campus for all parts of the community is critical and options around potential bus services would be fully explored through the travel plan.

If approved by the Area Board, any Shadow Community Operations Board will also have a role in representing the community's views on the timing and options for transport arrangements to the campus, based on local need, which will subsequently be considered through the development and implementation of a travel plan.

Subject to relevant approvals the present indicative timeline indicates a campus could be operational during 2013.

Melksham residents want more openness from Wiltshire Council on this project.

There is a variety of information on the council's website which has also been made available at public locations and at various meetings. In addition there have been a variety of community and partner meetings where questions were invited. This approach sits alongside the community-led consultation which has been coordinated by the Melksham CAP through the area board.

Graham Ellis – Will there be any scope for business start up units?

Wiltshire Council's economic development team are currently exploring opportunities for business start-up units in Melksham.

Why is this the first chance that the people of Melksham have had to ask any questions?

There was an opportunity to clarify the position and direction of the proposal to develop a campus for Melksham at the meeting in February. Questions received through the consultation process – either through the Melksham Community Area Partnership or via the dedicated email address – have been responded to either direct to the individuals/organisations who made contact or they have been answered within this Q&A document.

In addition to the above, the purpose of the specially convened Area Board meeting was for members of the public to ask questions so that local members could hear their views and participate in a discussion before making a recommendation on a campus proposal for Melksham.

	<p>Ben Anderson – A lot of people support the Campus proposal in principle but have concerns about getting to the proposed site, are there any plans for free public transport?</p> <p><i>Transport arrangements will be established through a travel plan, which forms part of a planning application. It is important not to pre-empt any part of this application and therefore the Council cannot answer detailed questions at this stage, however it must be noted that appropriate access to the campus for all parts of the community is critical and options around potential bus services would be fully explored through the travel plan.</i></p> <p><i>If approved by the Area Board, any Shadow Community Operations Board will also have a role in representing the community's views on the timing and options for transport arrangements to the campus, based on local need, which will subsequently be considered through the development and implementation of a travel plan.</i></p> <p>The Chairman thanked the attendees present for their points of view and questions.</p>
7.	<p><u>Partner and Stakeholder views on the Campus Proposals</u></p> <p>All partners and stakeholders present at the meeting were given the opportunity to share their views on the Campus proposals.</p> <p>Wiltshire Police – Insp Christian Lance advised that Wiltshire Police would be interested in basing Neighbourhood teams out of the Campus, this would free up deck space at the Divisional HQ at Hampton Park. It was felt that officers would be more accessible and be able liaise more with local residents. The opportunity to be based with other partners would be very beneficial from a Police point of view.</p> <p>Questions to Insp Lance:</p> <p>Would you not be replacing out of town with out of town, moving from Hampton Park to the proposed Campus? <i>As the Campus is proposed as a one stop shop, there would be more foot fall than at Hampton Park.</i></p> <p>Melksham CAYPIG – not represented at the meeting.</p> <p>Melksham Old Peoples Forum – Brian Warwick advised that older people were</p>

concerned about the viability of retailers in the town centre if the library was to move out of town, they wanted the library to remain in the town centre.

They were concerned that if the Campus came to fruition that there would be free public transport for the residents of Melksham to use it to its full potential.

They wanted a commonsense decision, not a political one.

Pleased that there would be better swimming facilities if the Campus went ahead.

Would like an enhanced town centre library with tourist information included on site.

If Wiltshire Council could provide youth centres for young people, why couldn't they provide drop in centres for the elderly.

Wiltshire Fire and Rescue Service - not represented at the meeting.

NHS Wiltshire - not represented at the meeting.

Melksham Oak School - Stephen Clark, Head Teacher advised that he welcomed community use of Melksham Oak school facilities, but stressed that this should be controlled by Melksham Oak school.

He felt that the site proposed could be better utilised and that the school had no views on the relocation of the Library.

Melksham Town Council – Cllr Chris Petty advised that the Town Council supported the Campus but regretted the possible loss of the library from the town centre and had some traffic concerns about the proposed site.

Parish Council Nominated Representatives

Melksham Without Parish Council – Cllr Mike Mills advised that Melksham Without supported the split site option, which would keep the library and youth centre in the town and that it had concerns about the increased traffic around the Melksham Oak school.

Atworth Parish Council – advised that they had concerns about the lack of a financial case put forward by Wiltshire Council for the project, and had concerns about the possible relocation of the library and youth centre.

	<p>Broughton Gifford Parish Council advised that they supported the views of Melksham Without and Atworth Parishes.</p> <p>Semington Parish Council – advised that they supported the Campus proposal.</p> <p>The Chairman then advised that a five minute comfort break would be taken.</p> <p>Melksham Chamber of Commerce – Graham Ellis advised that the Campus would be a facility to be proud of, but had concerns for the viability of some retailers in the town centre if the library were to relocate. He made the point that libraries were a changing facility with the advent of ipads and kindles etc.</p> <p>The Chamber of Commerce supported the proposal of the Woolmore Farm site, but wanted it to be cutting edge not bleeding edge.</p> <p>They looked forward to working with the Area Board in the future.</p> <p>The Chairman thanked all the speakers for their views.</p>
8.	<p><u>Areas for Discussion</u></p> <p>Lucy Murray Brown - Campus & Operational Estate Management Lead, Wiltshire Council took questions from the meeting on topics that included:</p> <p>Co-location</p> <p>Sarah Cardy – Could the Campus be of a modular design with the library and youth centre being added at a later date?</p> <p><i>Although this is possible in theory there would be a significant impact on project costs and there is no guarantee that with further budget cuts that this would be a viable option.</i></p> <p>Has an equality impact assessment been carried out yet?</p> <p><i>An Equalities Impact Assessment (EIA) has been carried out and will continue to be updated throughout the project. The EIA has always been a publically accessible document but if it would be helpful we would be happy to make it available on the Melksham campus pages of Wiltshire Council website.</i></p>

Assuming relevant member approvals, as the project progresses through the design and planning stage, the EIA document and action plan will be updated to ensure that equalities and inclusion issues are identified and addressed. We would also support any Shadow Community Operations Board in monitoring and updating the EIA document and action plan to ensure the new campus addresses local need in terms of equalities and inclusion issues.

Note: It was agreed that Lucy Murray Brown would send this document to all Area Board members.

Transport

Where would the funding come from to run a free bus service to the Campus?

If approved by the Area Board, a Shadow Community Operations Board would have a role in representing the community's views on options for transport arrangements to the campus, based on local need, which will subsequently be considered through the development and implementation of a travel plan.

Library

Chris Holden – There has been no indication from Central Government of any further cuts to library services.

Response from Niki Lewis, Service Director with responsibility for Libraries: Although at this point the Libraries Service in Wiltshire has not been asked to make any further savings, we cannot be sure that in future years this will not be the case.

What is the current footfall of the library?

Response from Melksham community librarian: Around 78,000 visits per year.

There must be a compelling case/reason to move the library, would Wiltshire Council gain financially from selling the site?

A single site campus would be significantly cheaper to operate in the long term. Wiltshire Council will look at the disposal of sites to fund its capital programme, but receipts would not be specifically linked to the campus project.

To clarify, sites could theoretically be sold for less than their market value if there is a community benefit.

	<p>Can we vote to take the library out of the Campus proposals?</p> <p><i>Response from Cllr Jonathon Seed – the Area Board members could make that decision if minded.</i></p> <p>Sports and Recreation</p> <p>What would happen if the Area Board voted against the Campus, would the leisure facilities go on hold?</p> <p><i>A report would be prepared for the Wiltshire Council cabinet detailing this if it were to happen. The cabinet would then decide.</i></p> <p>Points made included:</p> <p>The Future of Melksham as a vibrant town is modern facilities such as the Campus.</p> <p>Residents of Melksham want more information on the financial detail of the proposal.</p> <p>Wiltshire Council should talk to the rate payers to see what they want.</p> <p>Melksham town centre is starting to get back on its feet again, now we intend to stop it.</p> <p>The current library offers easy access to the elderly and families without transport, moving it out of the town centre would be unfair.</p> <p>Melksham desperately needs a new swimming pool, we shouldn't miss the boat on this.</p> <p>The Chairman thanked everyone for their views and questions, and Lucy Murray Brown, Niki Lewis and Mark Stone for their answers.</p>
9.	<p><u>Councillor Deliberations and Recommendations</u></p> <p>The Chairman advised that each councillor would be given the opportunity to sum up and give their views, the councillors would then vote on the Melksham Community Area Campus proposal.</p> <p>Cllr Jonathon Seed felt that councillors had to listen to the views of the residents of Melksham, it was important however to realise just what an opportunity</p>

Melksham was being given, being the first town to have a state of the art Campus facility.

Cllr Rod Eaton felt that the lack of a library in the town centre would not stop shoppers from using the town centre.

That Melksham at present had outdated and poor leisure facilities.

Cllr Mark Griffiths felt that single site proposal was the way forward for Melksham.

Cllr Steve Petty felt that the library should stay in the town centre where it was an accessible meeting place. He agreed that the swimming facilities were not good.

Cllr Jon Hubbard felt that the Campus should enhance current facilities rather than replacing them.

That he welcomed the prospect of the town getting better leisure facilities but not at the cost of the library and youth centre moving out of the town.

He felt that councillors should be doing what the people of Melksham wanted them to do.

Cllr Roy While felt that this was a great opportunity for Melksham to be first to have modern facilities, but that transport, parking and regeneration were important topics if the Campus was to prosper.

That he hoped to keep a library presence in the town centre as well as in the Campus.

Councillors then discussed the draft recommendation which was:

That based on an assessment of the overall service improvement possibilities and to ensure long term security of service delivery for the wider Melksham Community Area, the Melksham Area Board ask cabinet to:-

A. Support a single site solution for the Campus that will service the Melksham Community Area and ensure that this includes, as a minimum, all services outlined to the meeting.

B. Develop this proposal so it is delivered as near as possible

to Melksham Oak School, with the proviso that if officers, after conducting a final appraisals of all sites in the locality, are able to identify an alternative site closer to Melksham town centre that can deliver a single site solution in the same timescale and at the same cost, this is given equal consideration by Cabinet.

Cllr Roy While tabled a motion which was seconded by Cllr Rod Eaton that if agreed would appear as Para B. The existing Para B would then be renumbered Para C.

This amendment was as follows:

Notwithstanding the establishment of a new purpose built library in the proposed Campus in accordance with Para A, the offer negotiated with the Wiltshire Council Cabinet Member with responsibility for Library Services is recommended to the Cabinet by the Area Board.

This would provide for a limited, additional and residual volunteer based library service in Melksham Town Centre until at least 2014 when the service will be reviewed.

Councillors then voted on this amendment.

The amendment was carried unanimously.

Cllr Jon Hubbard then tabled a motion which was seconded by Cllr S.Petty requesting a split site, with the Library and Youth Centre remaining in the town centre.

Cllr Jon Hubbard requested that a recorded vote was carried out.

Cllr Seed – Against

Cllr Eaton – Against

Cllr Griffiths – Against

Cllr Hubbard – For

Cllr S.Petty – For

Cllr Roy While – Against

The amended motion was lost 4 votes to 2.

Councillors then voted on the substantive motion, which was tabled by Cllr Roy While and seconded by Cllr Rod Eaton, this was as follows:

That based on an assessment of the overall service improvement possibilities and to ensure long term security of service delivery for the wider Melksham Community Area, the Melksham Area Board ask cabinet to:-

- **A. Support a single site solution for the Campus that will service the Melksham Community Area and ensure that this includes, as a minimum, all services outlined to the meeting.**

- **B. Notwithstanding the establishment of a new purpose built library in the proposed Campus in accordance with Para A, the offer negotiated with the Wiltshire Council Cabinet Member with responsibility for Library Services is recommended to the Cabinet by the Area Board. This would provide for a limited, additional and residual volunteer based library service in Melksham Town Centre until at least 2014 when the service will be reviewed.**

- **C. Develop this proposal so it is delivered as near as possible to Melksham Oak School, with the proviso that if officers, after conducting a final appraisals of all sites in the locality, are able to identify an alternative site closer to Melksham town centre that can deliver a single site solution in the same timescale and at the same cost, this is given equal consideration by Cabinet.**

The substantive motion was carried 4 votes to 2.

10.

Preliminary Management Project - subject to reaching a decision on Agenda item No.9

Lucy Murray Brown then outlined the proposal for the forming of a Shadow Community Operational Board (SCOB) to overview the testing of community led management proposals and the draft Terms of Reference.

Cllr Jon Hubbard then tabled a motion which was seconded by Cllr S.Petty requesting a deferral

Cllr Seed – Against

Cllr Eaton – Against

Cllr Griffiths – Against

Cllr Hubbard – For

Cllr S.Petty – For

Cllr Roy While – Against

This vote was lost 4 votes to 2.

Councillors then voted on the motion, which was tabled by Cllr Roy While and seconded by Cllr Rod Eaton, this was as follows:

Cllr Seed – For

Cllr Eaton – For

Cllr Griffiths – For

Cllr Hubbard – Abstain

Cllr S.Petty – Abstain

Cllr Roy While – For

This vote was carried by 4 votes.

Note: Cllrs Hubbard and S.Petty abstained from this vote.

Decision

- **Melksham Area Board confirm themselves as the governance route for the development of the Melksham Community Campus and delivery of the preliminary management project in the Melksham Community Area and asks officers from the CAOD Programme team to support the creation of a Shadow Community Operational Board (SCOB) under the draft terms of reference circulated to Area Board members and circulated on the Melksham Community Area website.**
- **The Area Board to be represented on the SCOB by a Member to be agreed by the Board. Other groups to be invited to attend as**

	<p>agreed by the Area Board.</p> <ul style="list-style-type: none"> The draft terms of reference, amended to reflect the wishes of the Melksham Area Board to confirm themselves as the governance route for the development and delivery of the preliminary management project in the Melksham Community Area, be confirmed at the next Area Board meeting together with the nomination of a member to the Shadow Community Operational Board. <p>The Chairman emphasised the draft nature of the terms of reference and that the Area Board would revisit them at future meetings if required.</p>
11.	<p><u>Future Meeting Dates</u></p> <p>Tues 12 Apr- Seend Community Centre (Localism and Core Strategy).</p> <p>Thurs 12 May 2011 – Melksham Oak school.</p> <p>Weds 14 July 2011 – The Riverside Club, Melksham. (NB. 2pm Start)</p>
12.	<p><u>Evaluation & Close</u></p> <p>The Chairman thanked everybody for attending the meeting.</p>

This page is intentionally left blank

Melksham Community Area Partnership

Campus Consultation Results
29 March 2011

Chris Holden - Chair

Context

We are Melksham Community Area Partnership

We were asked to consult on proposal

We did:

Questionnaire – 12,500 households

Young People Questionnaire

Open Days – 3

Meetings with groups - 10

Consultation Response

Questionnaire – 803 (= 1400 people)

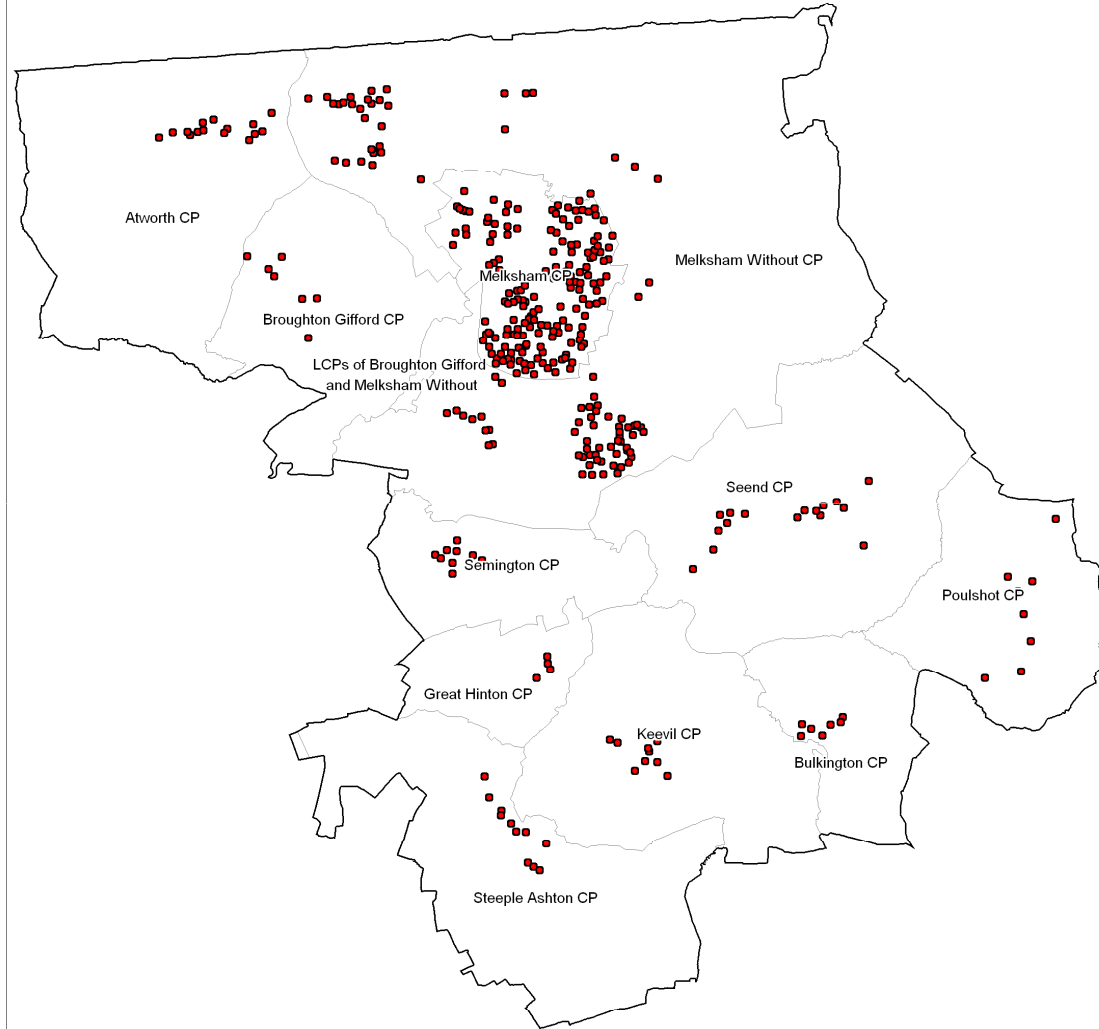
Young People Questionnaire - 78

Open Days – 41

Meetings with groups - 10

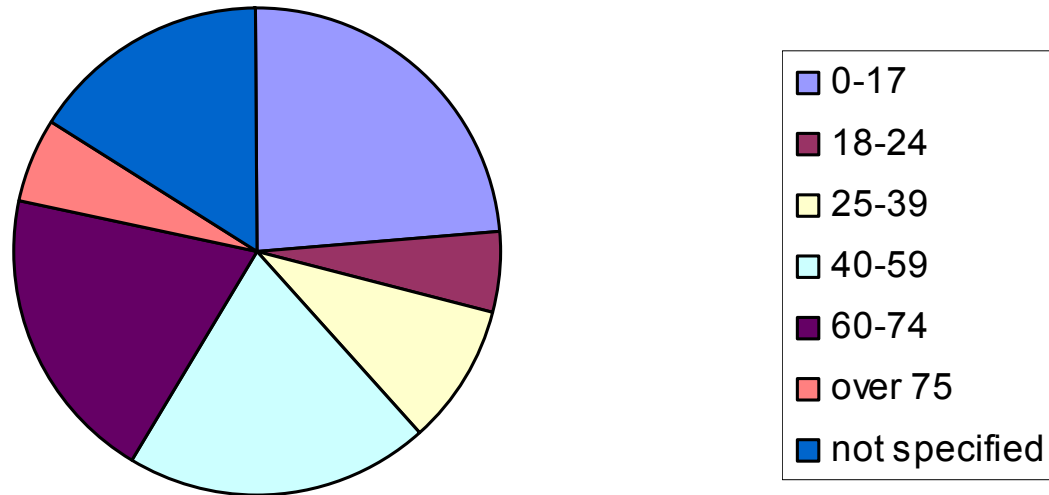
Letters/emails – 17

Questionnaire response – Geography

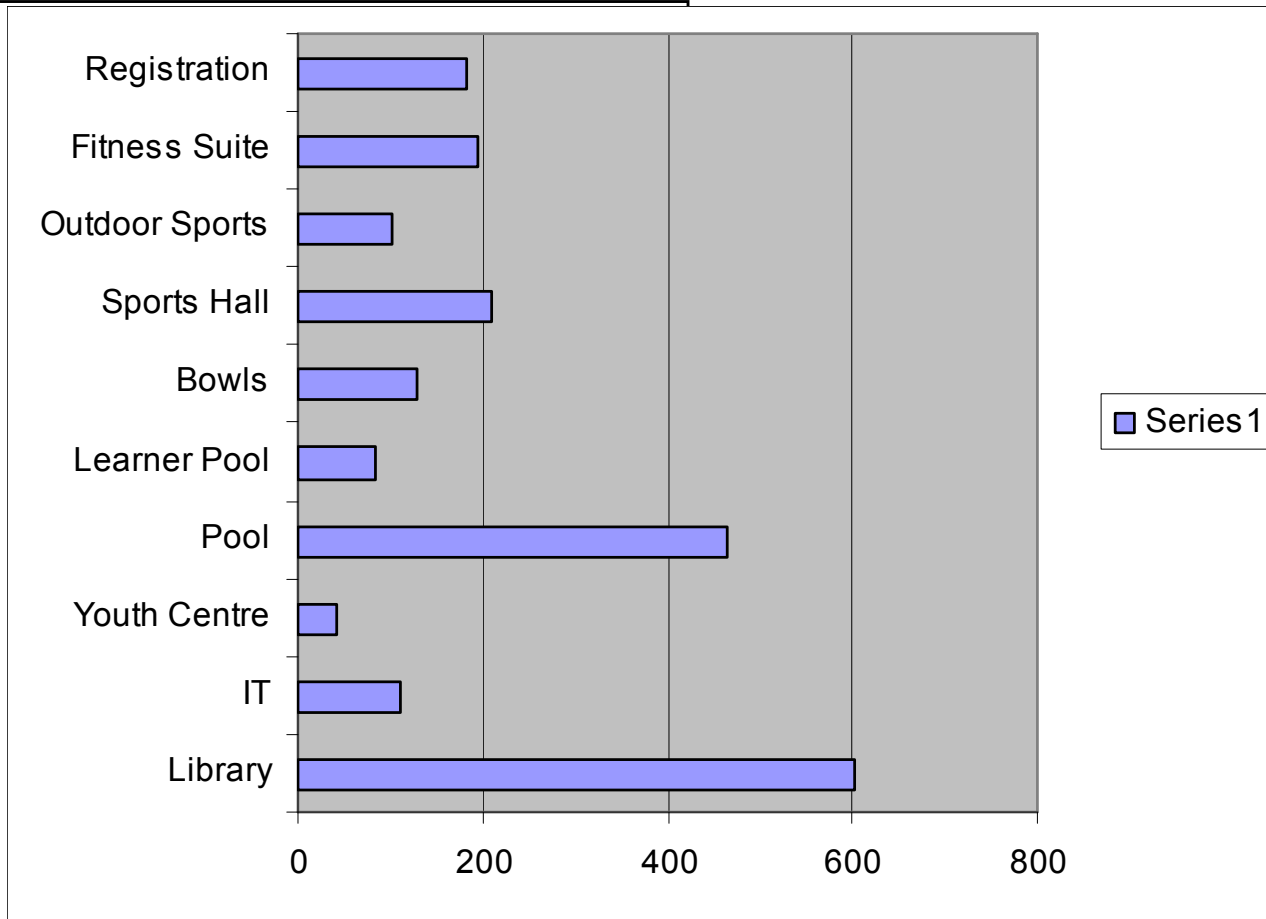


Questionnaire response -Age

People represented in the questionnaires (total 1462)



What services people use



General Response

Positive response - 16% in unqualified support.

The rest raised issues:

Library

Youth Centre

Swimming Pool

Access

Buses

Parking

Cost

Library

Don't move the Library

Access for elderly/disabled

Access for children/schools

Economic impact on Town Centre

Social impact on 'heart' of town

Comments by specific services

	Library	Youth Centre	Swimming Pool	Fitness Suite	Internet	Total
MAIN COMMENTS	284	30	133	51	46	544
YP COMMENTS	1	32	9	4		46
Keep it in town	227	41	33	5	23	329
appreciate/ value service	28	8	8	7	5	56
Update of facilities needed	15		17	12		44
access concerns	19		1	2	1	23
elderly access concerns	9		4		2	15
adult and children separate facilities			13			13
increase size	2		10	1		13
children/ youth access concerns	6		4	1	1	12

Youth Centre

Don't move the Youth Centre

YP Questionnaire:

41% made comments – 100% don't move

Fairness for everyone

Next to school

No one will go

Swimming Pool

On the question specifically about the swimming pool in the questionnaire 133 made a comment, of which 33 said it would be too far

Access

Too far in general 38%, 13%, 14%, 11%

Elderly/disabled

Children/schools

Vulnerable

Transport

Concern about increase of travel

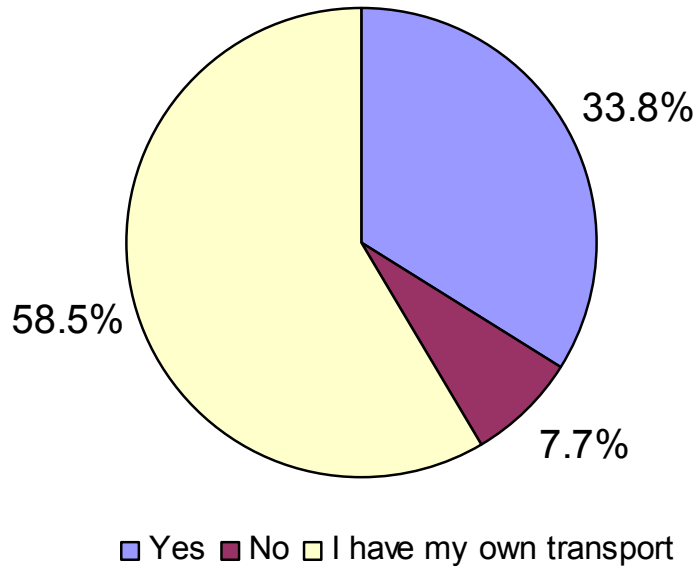
Need for bus

Bus should be free

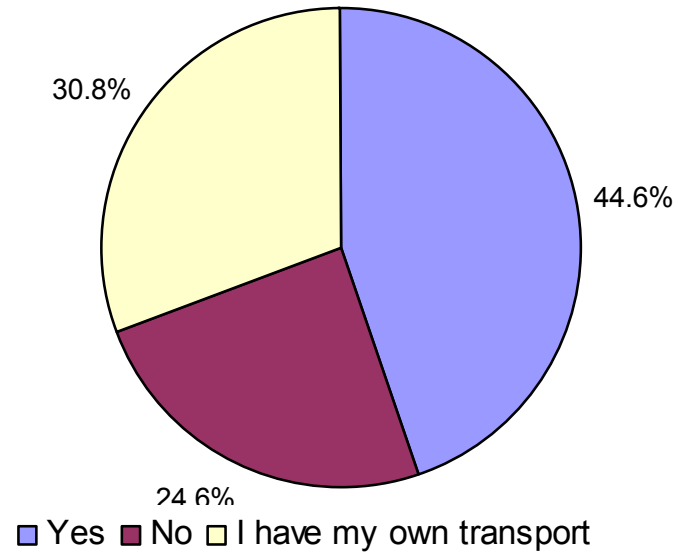
Current bus routes need improving

People who would need a bus

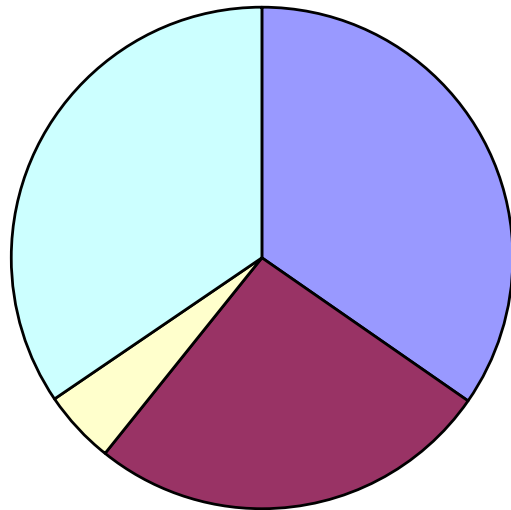
Main



Young people



Where people would require a bus from

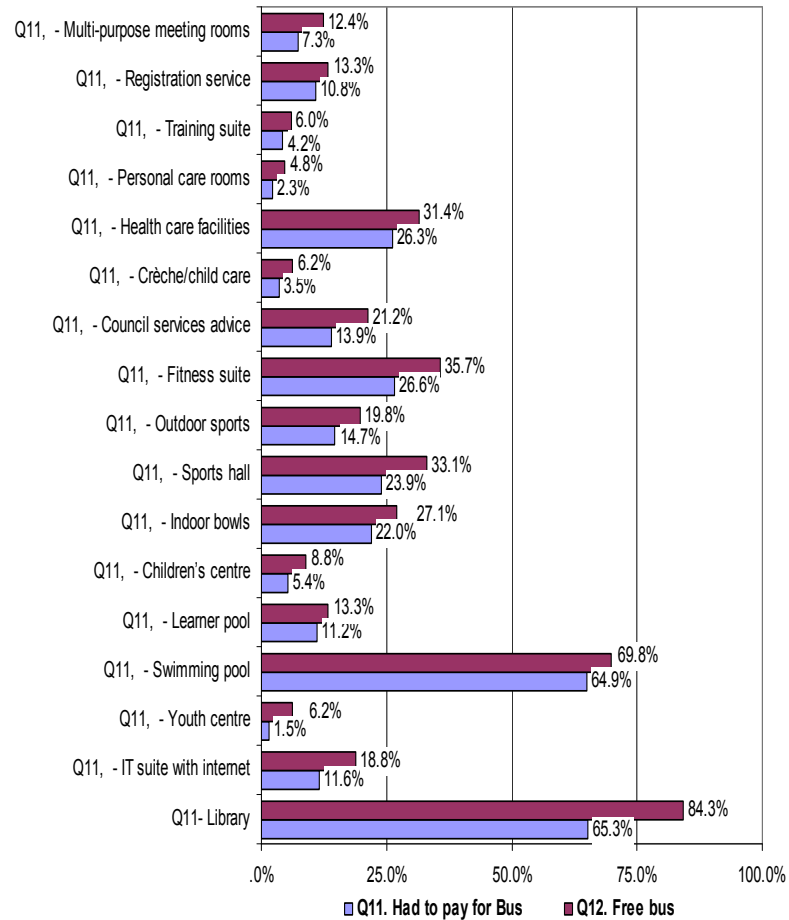


- Melksham town centre
- Other Melksham
- Across whole area
- Villages



- SHAW VILLAGE
- Seend
- Seend Cleeve
- GREAT HINTON
- BROUGHTON GIFFORD
- Bulkington
- Poulshot
- BEANACRE
- Keevil
- Semington
- STEEPLE ASHTON
- BERRYFIELDS

Free bus use



More people would use the campus if a free bus was provided

Most would need bus for Library and Swimming Pool

Parking

Adequate parking needed

Parking should be free

Cost

In general waste of money

Specifically Library as recently refurbished

Specifically Youth Centre as recently refurbished

Concern about cost of use

Concern about cost to the community

Further

Suggestions for inclusion

Details on timings

Details on value of service

Details on what would encourage use of services

<http://www.melksham.communityarea.org.uk>

miriam@melksham.communityarea.org.uk